

INTRODUCTION

The Rotating Drum Screen RSM model is designed for small and medium municipal or industrial wastewater treatment plants. It is widely used in the wastewater pretreatment and industrial screening processes. In most cases, the application of RSM Rotating Drum Screen can achieve 30%~60% solid removal efficiency, thus can reduce the treatment loading for subsequent procedures.

The RSM model consists of screening system (sieve-reel), driving system, cleaning system, solids removal & gathering system and control system. The rotating sieve-reel with conical bars is immersed in the RSM inside tank, in solids are separated continually in the influent. Solids will be removed by the scraper on the other side and gathered for further disposal. While the solids clog in the bar, the water level will be higher, level switch will start the cleaning system to wash out the clogging solids, ensure the treatment capacity.

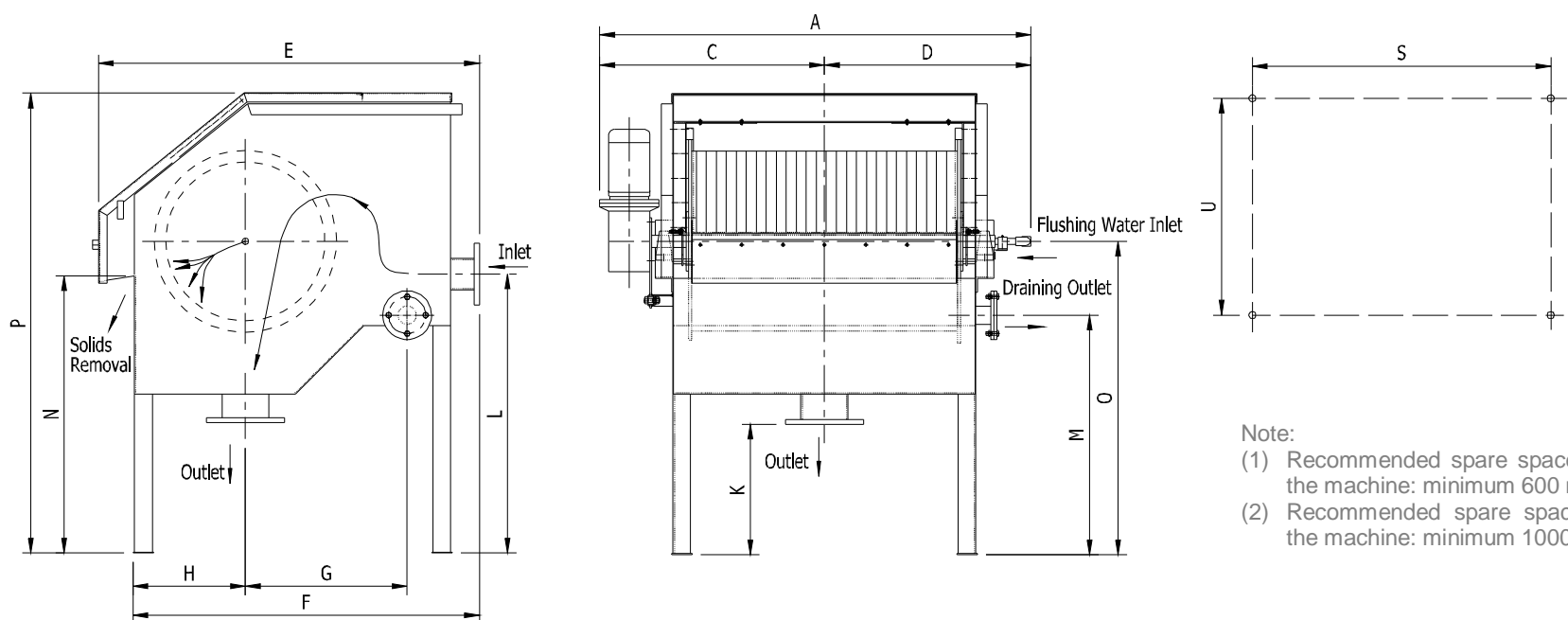
FEATURES

- Cost effective for reducing the wastewater treatment loading
- Running reliably under low maintenance cost
- Conical bar design is easy for liquid getting through and solid cleaning
- Made of stainless steel, long time running against corrosiveness
- Applicable for high temperature liquid separation
- Running continually with automatic cleaning system
- Customized service area by Sieve-reel design
- ComPACT™ design save both energy and space
- Full-body boxed design eliminate secondary pollution risk



RSM 910 Rotating Drum Screen
Installed for multinational client in Songjiang, Shanghai
June, 1999

DIMENSION



- Note:
- (1) Recommended spare space around the machine: minimum 600 mm.
 - (2) Recommended spare space above the machine: minimum 1000 mm.

MODEL	INTEL	OUTLET	WASHING PIPE	A	C	D	E	F	G	H	K	L	M	N	O	P	S	U
RSM 610	DN150	DN200	DN15	1257	680	487	1360	1155	550	460	184	715	575	705	826	1383	1057	710
RSM 1220	DN200	DN250	DN20	1835	975	800	1360	1155	550	460	215	745	605	725	856	1413	1057	1400
RSM 1830	DN250	DN300	DN25	2445	1280	1105	1360	1155	550	460	245	775	635	750	886	1443	1057	2010

Note:
(1) Unit: millimeter (mm).

SPECIFICATION

CLEARANCE ⁽¹⁾	0.25	0.50	0.75	1.00	1.50	2.50	SIEVE-REEL DIAMETER (mm)	SIEVE-REEL DIAMETER (mm)
MODEL	TREATMENT CAPACITY ⁽²⁾ (m ³ /h)							
RSM 610	58	102	137	170	216	252	616	610
RSM 1220	113	205	274	338	432	504	616	1220
RSM 1830	182	302	421	511	659	756	616	1830

Note:
(1) Customized clearances are available.
(2) The flow rate data are based on the clean water experiments.